



GPX10<sup>15</sup>  
GRADE

PRODUCT DATA SHEET

GENERAL PURPOSE DIAMOND BLADE

### GPX10-15 GENERAL PURPOSE

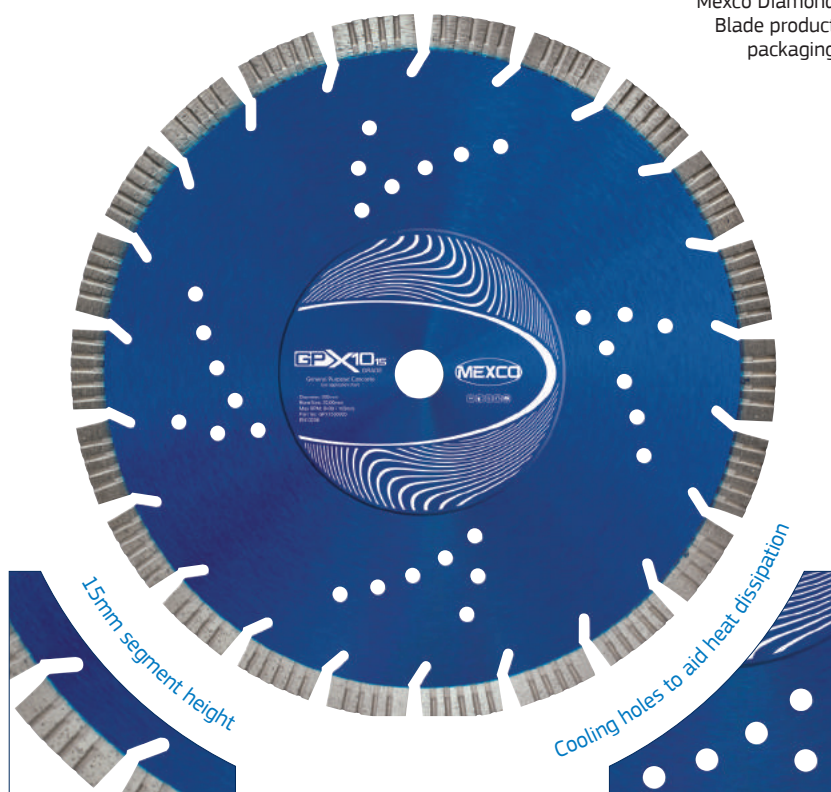
This product offers a cost effective solution for the user who requires a diamond blade that can cope with the cutting of the most widely used non-abrasive building materials.

#### KEY FEATURES

- 15mm Segment Height
- Angled gullets for quick stock removal
- Cooling holes to aid heat dissipation
- Castellated segments for fast cutting



Mexco Diamond  
Blade product  
packaging



#### PRODUCT OVERVIEW:

**Grade:** X10

**Segment Height:** 15mm

**Segment Attachment:** Sintered

**Dry/Wet:** Wet or Dry Use

**Recommended for:** Angle Grinder, Disc Cutter, Bench Saw & Floor Saw

**Segment Type:** Segmented

**Gullet Type:** Angled

**Undercutting Protection:** No

X10  
GRADE

EXCELLENT VALUE

The X10 range of products has been specifically designed to offer the user excellent performance in a wide spectrum of cutting and drilling applications whilst providing the benefit of a low purchase cost.

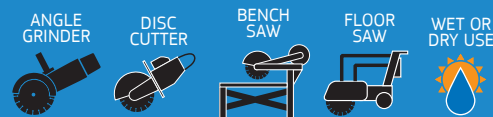


## PRODUCT DATA SHEET

### DIAMETERS AVAILABLE:

Code	Diameter		Segment Width (mm)	Bore Size / s (mm)
	(mm)	(in)		
GPX1511522	115	4.5	3.2	22.23
GPX1512522	125	5	3.2	22.23
GPX1523022	230	9	3.2	22.23
GPX1530020	300	12	3.2	20.00
GPX1535020	350	14	3.4	20.00
GPX1535025	350	14	3.4	25.40

### SUITABLE FOR USE ON:



### APPLICATION:

- Non Abrasive Indian Sandstone
- Hard Facing Brick
- Medium Facing Brick
- Hard Slate
- River Gravel Aggregate Concrete
- Flint Aggregate Concrete
- Reinforced Concrete
- Concrete Kerbs
- Concrete Slabs
- Reinforced Lintels
- Hard Limestone
- Limestone Aggregate Concrete
- Concrete Pavements
- Soft Facing Brick
- Concrete Blocks Over 15kn
- Hard Sandstone



Hard Slate



Flint Aggregate  
Concrete



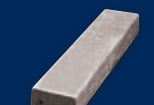
Reinforced  
Concrete



Concrete Kerbs



Concrete Slabs



Reinforced  
Lintels

- **RECOMMENDED**  
to cut these materials

- **Will cut these materials**  
with the possibility of reduced  
lifetime / glazing

CONFORMS TO EN13236

www.mexco.co.uk | Tel: 0845 602 4274 | Email: sales@mexco.co.uk

Please note: Before using any cutting, grinding or drilling tool you should always consult your machine manufacturers hand book to establish the consumable tools suitability for the machine being used. Always wear the correct safety clothing and accessories before you commence use of the equipment.